

ANIMAL PHyla PHYLOGENETIC TREE ASSIGNMENT

ONE SUBMISSION PER TRIO OF STUDENTS. YOU MAY WORK WITH A STUDENT FROM A DIFFERENT PERIOD.

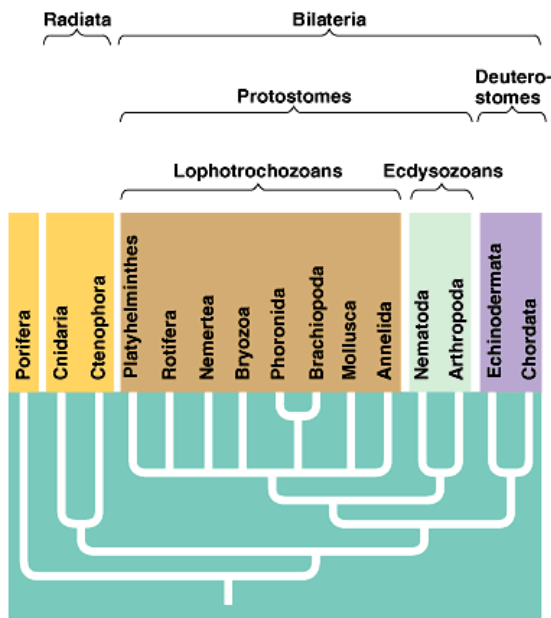
PURPOSE:

To construct a detailed phylogenetic tree of invertebrate phyla to facilitate understanding and knowledge of animal classification.

35 Points Possible.
Grade based on accuracy/detail, following instructions, neatness, presentation.

PROCEDURE:

1. Starting at the **ancestral protist** of the animal kingdom create a phylogenetic tree of all invertebrate phyla.
2. At each branching point define the derived characteristic that creates the branch. This must be done in detail at the **first** point where a shared derived characteristic is found.
3. At each successive branch you must include the previous characteristics but you need not define them, just list them. For example: the phylum rotifera should have listed underneath that it is a pseudocoelomate, bilaterally symmetric, triploblastic, eumetazoan.
4. **At each terminating phyla**, include unique characteristics to the phyla and important classes and their characteristics with examples of members of each class.
5. Pictures at each phyla should be included but **cannot be clip-art** images. A good source of line images can be found at <http://biodidac.bio.uottawa.ca/>



(a) Tree based on molecular comparisons

Copyright © Pearson Education, Inc., publishing as Benjamin Cummings.

